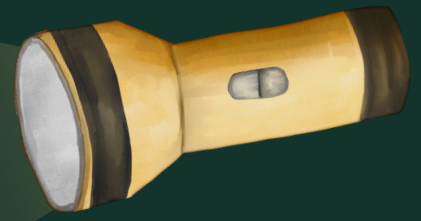


Moth light trap



Have you ever wondered what lives in your garden at night?
Let's discover by creating a simple moth
light trap with everyday objects.



What will you need?

- White sheet
- Washing line or strong cord
- Clothes Pegs
- Bright lamp or torch



Peg your white sheet over a washing line or over some strong string or cord.

Turn off nearby lights so that you are in the dark.

Shine your torch or lamp onto the white sheet. A bright light works best!

Now be patient!
Can you identify the moths you see?



You could attract more moths into your garden by planting nectar rich plants, having water available for them and by switching off any unnecessary lights.

Discover more Dark Sky Resources at
www.beacons-npa.gov.uk/learning/dark-sky-festival-resources/



Bannau
Brycheiniog



Siobyn Bwaog
Black Arches Moth
36 - 56mm



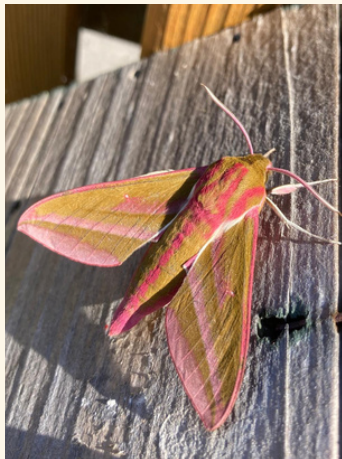
Gwalch-Wyfyn Poplys
Poplar Hawk Moth
65 - 90mm



Teigr yr Ardd
Garden Tiger Moth
50 - 78mm



Clai Lloerol
Setaceous Hebrew
Character Moth
28-38mm



Gwalch-Wyfyn Helyglys
Elephant Hawk-Moth
45 - 60mm



Piod Bach
Small Magpie Moth
24 - 30mm



Wylun Deri
Oak Eggar Moth
25 - 40mm



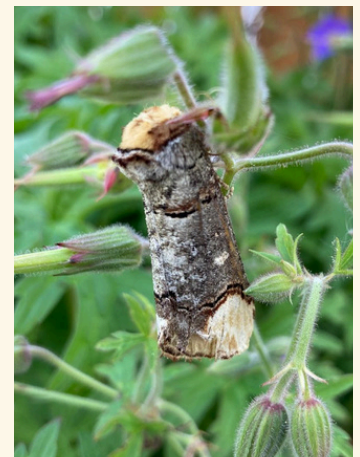
Gwyfyn Peli Pinc
Peach Blossom Moth
32 - 38mm



Dart Calon a Saeth
Heart and Dart Moth
30 - 38mm



Ermin Gwyn
White Ermine Moth
36 - 46mm



Blaen Brigyn
Buff-Tip Moth
44 - 68mm